

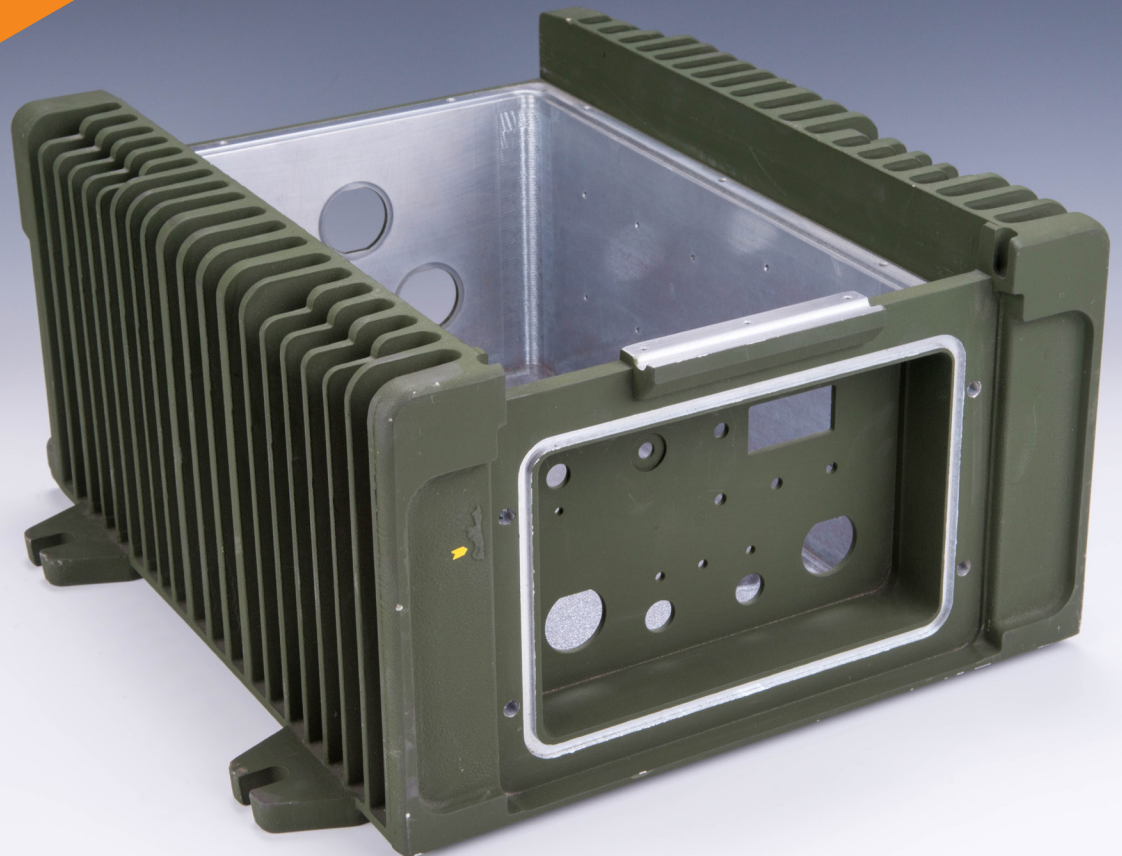
Complex Tactical Supply Housing for US Military



A CASE STUDY

Batesville Products, Inc.

434 Margaret Street
Lawrenceburg, IN 47025
batesvilleproducts.com
812-537-2275





The Customer

This customer services the military industry with parts such as this **tactical power supply housing** for the US Army.

The Challenge

The customer needed a supplier who could manufacture a complex, lightweight housing that would meet military product standards.

The Solution

With almost 75 years of permanent mold experience and having done previous work in the military industry, we confidently partnered with the customer on this complex part.

Casting

The casting is unique because it is a **six-parted permanent mold casting**, making it an extremely complex and uncommon permanent mold process.

Coating

After casting and machining, this part received a special coating operation. The part received a chromate coating and chemical agent reactive coating paint that is necessary in the military industry. These special coatings help the part be **environmentally sealed, waterproof, and heat transferrable**.

The Outcome

By using an **aluminum** housing, the customer was able to make the product **lightweight**, a key selling point in the military industry, with the fully assembled power supply weighing 36 pounds.

The customer was pleased with the final look of the part; the army-green finish was not only **aesthetic** but also **practical** for the military industry.

Many years later, we still produce parts today for this satisfied customer.